

TV·EARS®

To activate your 5 Year limited warranty:

Call: 1-888-883-3277
Go online: tvears.com/warranty
Or Mail to: TV Ears, Inc.
2701 Via Orange Way, Suite 1
Spring Valley, CA 91978

tvears.com
Facebook.com/tvearsinc
Twitter: @tvears

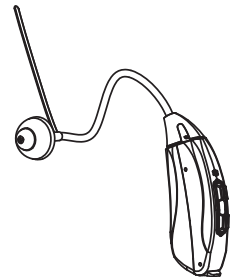
1-888-883-3277 — Sales Main Line
1-866-611-9934 — Support
1-888-958-7899 — Fax
info@tvears.com — Email

Instructional Videos available: tvears.com/instructional-videos

Your New TV Ears HDPro Includes:

HD Pro

1x Personal Sound Amplification Device



Magic Domes

1x 10mm magic dome
1x 12mm magic dome



Open Domes

1x 9mm Open dome
1x 12mm Open dome



Closed Domes

1x 9mm Closed dome
1x 12mm Closed dome
1x 15mm Closed dome



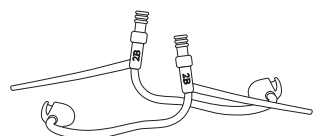
Foam Dome

1x 9mm memory foam dome



Sound Tube

2x 2BL tube or **2x** 2BR tube

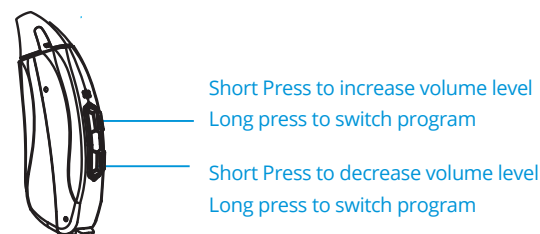
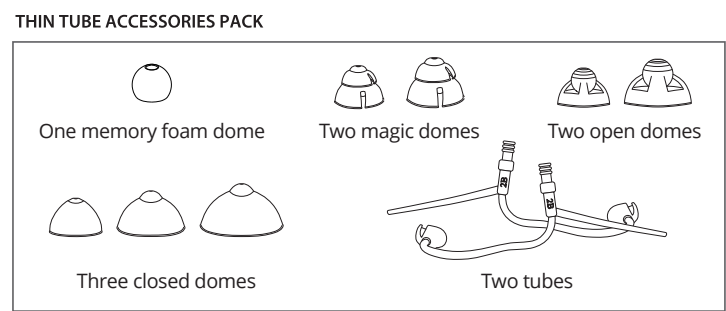
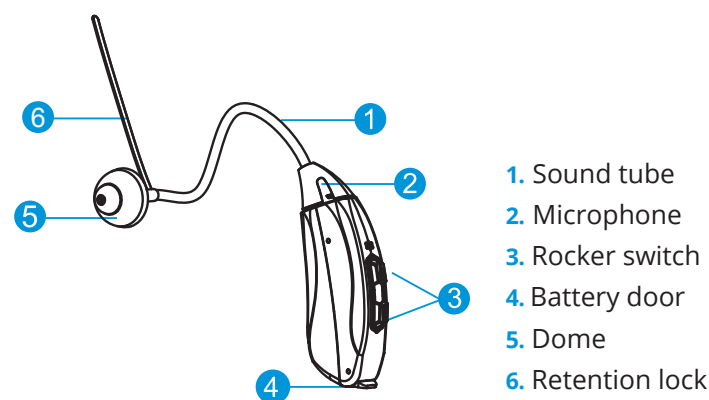


Cleaning Tools

1x Cleaning Brush
1x Cleaning wire



TV Ears HDPro



Features

Rocker Switch

The rocker switch serves as a volume control as well as a program switch.

Volume Control

Press the upper part of the switch to increase the volume.

Press the lower part to decrease the volume.

Program Switch

Press and hold either part of the switch for 3 seconds to change the current program.

Three Pre-Set Program Levels!

Program 1: For normal, universal use

Program 2: For noisy environments

Program 3: For movie theatres or play houses

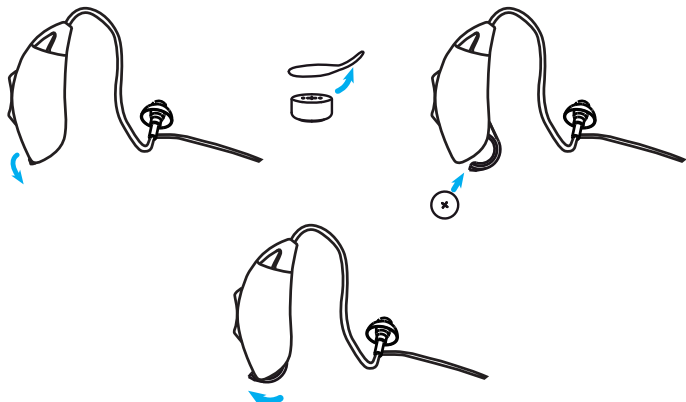
Operation

Turning your PSAP on/off

Your PSAP is automatically **ON** whenever the Battery Compartment Door is closed. To turn you PSAP **OFF**, simply open the Battery Compartment Door. Always leave the Battery Compartment Door open when not in use.

To insert a battery

- ▶ Open the Battery Compartment Door by gently swinging it into the open positions.
- ▶ Remove the tab from a new #312 size battery.
- ▶ Place the new battery in the Battery Compartment Door with the positive (+) or flat side up as pictured.
- ▶ Click the Battery Compartment Door close.



Put on your PSAP

Before putting on your PSAP, please clean your ear and make sure the battery door is closed properly. Follow the procedure for inserting your PSAP.

Step 1: Hold the sound tube

Step 2: Place the PSAP over the top of the ear.

Step 3: Gently insert the dome into ear canal.

Step 4: Move the retention lock and place it into the bowl of your ear.

Help with Whistling

Whistling may occur if the PSAP is turned on, but not securely seated in your ear. This is normal. The whistling will stop once the PSAP is properly seated in your ear. Other causes include a blockage of wax, or damaged ear piece or tubing, or excessive volume. Please take appropriate measures to stop the whistling.

Find the Perfect Fit!

Your new hearing device comes with a variety of dome tips. Use this guide to find the best fit for you.

Magic Domes



Medium Magic Dome comes pre-attached on your PSAP. This tip is a mix of an Open and a Closed dome tip. It is best for first time users. Louder than an Open, yet quieter than a Closed.

Open Domes



Best for mild amplification. Overall better quality of sound. Good for the very common higher frequency losses.

Closed Domes



Best for moderate to severe amplification. Helps with background noise reduction. Overall louder sound. Helps eliminate feedback on higher volume levels.

Foam Dome

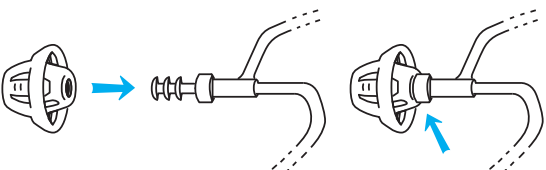


Best for very mild amplification and issues with volume being too loud.

Dome

Attach the dome

Push the dome over the grooves on the tubes to mount it.



Need more Dome Tips?

For best use, it is recommended that the dome tips be changed on a monthly basis.

To order more dome tips, please give us a call at 1 (888) 883-3277